



**WELCOME TO**

**PORTO ALEGRE**

26th Annual International Conference on  
Digital Government Research (dg.o 2025)  
Digital Government Fostering Social Cohesion for Reducing Inequalities

# TRAVEL GUIDE

**09 - 12 JUNE 2025**

Pontifical Catholic University of Rio Grande do Sul (PUCRS)

# TRAVEL GUIDE

## 1. Preparing Your Participation

Before traveling, we recommend that all authors, chairs, and participants review the information below to help ensure a smooth experience during dg.o 2025.

**1. Conference Program & Paper Information:** You can find the full conference program [here](#). The program includes:

- Your paper title, track, session number, and presentation schedule
- Contact details of your track chair
- Unsure about your session, track number, or ID? [Check the program](#).

**2. Instructions by Role:** Scroll to the bottom of the program page to find detailed guidelines for each participant type:

Instructions for Presenters

- File format, naming, upload folder, and time allocation.

Poster Presentation Guidelines

- Design specs, deadlines, and printing service info.

Instructions for Participants

- Campus orientation, reception desk location, meals, and Wi-Fi access.

Instructions for Track Chairs

- Timekeeping, session flow, and interaction with presenters.

## 2. Before You Travel

**Visa Requirements:** Information on visa requirements/exemptions can be found [here](#). To check your specific visa requirements, visit the official dg.o 2025 visa information page [here](#).

**Medical and Health:** To enter Brazil, there are no specific vaccines required for most travelers. However, if you are planning to visit Amazon forest, the yellow fever vaccine is recommended.

**Travel/Health Insurance Reminder:** Public healthcare is available in Brazil through the Brazil's public and universal health system (SUS), even for international visitors. São Lucas Hospital is at the PUCRS campus, and is one of the SUS hospitals in the city. However, as visiting any other country, we recommend contracting a travel/health insurance before your trip.

**Weather:** Porto Alegre is in the southern hemisphere, which in June is the winter season, so weather tends to be mild to cold. Average daytime temperatures range from 10°C to 20°C (50°F to 68°F), dropping lower in the early morning, and evening. Rain is also common this time of year. The area is under the weather phenomena La Niña, which can cause several temperature changes, so it is recommended to check it a few days before packing.

## 2. Before You Travel

**What to pack:** A warm jacket or coat, comfortable, closed-toe shoes for walking, sunscreen for outdoor activities, as sunny days still occur, and layered clothing to adapt to changing temperatures throughout the day.

**Time:** Porto Alegre operates on Brasília Time (BRT), which is UTC-3, with no daylight saving time, so the time zone remains consistent year-round.

**Language:** The official language of Brazil is Portuguese, spoken by the entire population. In addition to Portuguese, English and Spanish are also spoken in some specific areas, particularly in tourist destinations and major cities. Local people are usually glad to help 😊.

Our suggestion is to download Google Translate and enable offline translation for Portuguese ↔ English. It is very helpful for reading signs, menus, and even for live conversations via camera or voice. To help you during your stay, here are some useful phrases:

| Portuguese          | English                 | Portuguese            | English                  |
|---------------------|-------------------------|-----------------------|--------------------------|
| Olá                 | Hello                   | Sim                   | Yes                      |
| Você fala inglês?   | Do you speak English?   | Não                   | No                       |
| Obrigado / Obrigada | Thank you (male/female) | Você pode me ajudar?  | Can you help me?         |
| Por favor           | Please                  | Eu não falo português | I don't speak Portuguese |



**Security:** Porto Alegre is a vibrant and culturally rich city, but like any major urban center, it's important to take basic precautions to ensure a safe and comfortable experience. Here are some essential safety tips for navigating the city.

### General Safety

- Be aware of your surroundings: stay alert, especially in crowded areas like public markets, transportation hubs, or tourist attractions. Avoid displaying valuable items such as jewelry, cameras, or phones openly.
- Use trusted transportation: prefer ride-sharing apps like Uber or authorized taxi services. We do not recommend using public transportation for visitors unfamiliar with the city.
- Also, avoid walking long distances across the city, especially at night. Only walk within safe and known neighborhoods. Never accept rides from strangers.
- Stay in well-lit areas: After dark, remain in populated and well-lit spaces. Avoid isolated streets and walking alone at night.

- The selected hotels are located in a well-lit areas, so you can wandering and have a good time.
- Keep personal items secure: Use a crossbody bag or backpack that stays close to your body. In busy areas, always keep your belongings in front of you and zipped.
- Emergency contacts: Save important numbers such as emergency services, your hotel, and the conference organizers on your phone for easy access.



**By staying mindful and following these tips, you will help ensure a safe and enjoyable visit to Porto Alegre.**

**Currency:** the local currency is the Brazilian Real (BRL), symbolized as R\$. However, please note that US dollars and euros are also widely exchangeable at currency exchange offices. Check with your hotel the most convenient one.

- Credit cards are so widely accepted in Porto Alegre and region, especially in urban areas and tourist destinations. The most commonly accepted cards are Visa and MasterCard, while American Express is also accepted in many places. It's advisable to carry some cash for local establishments or in remote areas where card payments might not be available.
- ATMs are widely available throughout Brazil, including in major airports, shopping malls, and banks. Most ATMs accept international cards, particularly those from Visa and MasterCard networks. It's a good idea to notify your bank about your travel plans to avoid any issues with card usage abroad.

**Using your cellphone:** The country code of Brazil is +55. Mobile SIM cards are widely available in Brazil. Major providers include Claro, Vivo, and TIM. To purchase a SIM card, you can use a valid foreign document, such as a passport.

**Electrical appliances:** the electric supply in Brazil is either 127 volts or 220 volts, with a frequency of 60 hertz. It is important to check the voltage in the specific area of Porto Alegre you will be staying, as it can vary.

There are two major associated plug types in Brazil:

- Type C: Two round pins, commonly used in Europe.
- Type N: Three round pins, including a grounding pin.

Please refer to the images below for visual reference:



### 3. How to Get There

Porto Alegre, the capital of Rio Grande do Sul, the southern Brazilian state, is well-connected and easy to reach by air, bus, or car.

**By Air:** The main airport is Salgado Filho International Airport (POA), located about 8 km from the city center and 5 km from the PUCRS campus. The airport offers domestic and international flights, and is the easiest way to arrive in Porto Alegre.

Direct international flights to POA are available from:

- Buenos Aires, Montevideo, Lima, Santiago, Panama City, and Lisbon.

Connecting flights (via São Paulo - GRU Airport):

- From the USA: New York, Dallas, Newark, Miami, Chicago, Houston, Atlanta, Orlando.
- From Canada: Toronto, Montreal.
- From Europe: Paris, Frankfurt, Lisbon, Madrid, London, Istanbul, Rome, Milan, Zurich, Porto, Barcelona, Amsterdam.
- From South & Central America: Bogotá, Mexico City, Córdoba, Cartagena, Medellín, Santa Cruz (Bolivia), Punta Cana.
- From Africa: Cape Town, Addis Ababa, Luanda, Johannesburg.
- From the Middle East: Dubai, Doha.



From the airport to PUCRS or your hotel, we recommend using Uber or a trusted taxi service. Public buses and subways are available but not recommended for visitors unfamiliar with the city.

You can book a private airport transfer with Fellini Events, the official travel agency for dg.o 2025.

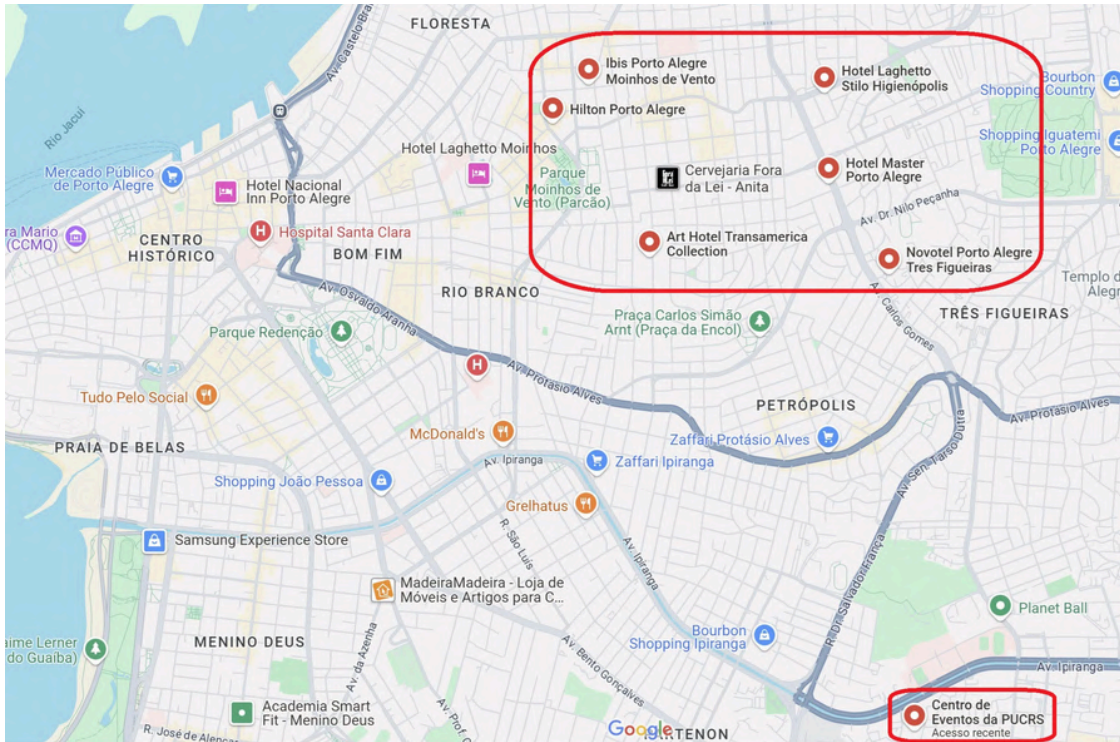
**By Bus:** The Porto Alegre Bus Station (Rodoviária de Porto Alegre) connects the city to major destinations throughout Brazil. It is located near the city center. From the terminal, travelers can take a taxi or Uber to PUCRS or their hotel.

**By Car:** Porto Alegre is accessible via BR-116 and BR-290 highways. Be aware that traffic and parking in the city center can be difficult. It is safer and easier to use a private parking lot or rely on ride-sharing services.

**By Train:** There is no long-distance train service to Porto Alegre. The city's train system only connects some parts of the metropolitan area and is not recommended for conference attendees.

## 4. Where To Stay

Porto Alegre is known for its excellent hotel infrastructure, offering comfort and high-quality services to visitors. For dg.o 2025, we've selected six recommended hotels that stand out for their proximity to PUCRS and their high standards of service.



These recommendations were carefully chosen in collaboration with Fellini Events, the official travel agency supporting the conference. Each hotel provides a pleasant and convenient experience, ensuring that your stay in Porto Alegre is not only comfortable but also strategically located near the event venue.

Whether you are looking for a modern business hotel or a stylish retreat to unwind after a full day of learning and networking, or an affordable hotel, you will find excellent options below.

### Recommended Hotels:

Novotel Porto Alegre Três Figueiras ★★★★★ | Av. Soledade, 575 – Três Figueiras, Porto Alegre | 4.7 km from PUCRS.

Art Hotel Transamerica Collection ★★★★★ | Av. Cel. Lucas de Oliveira, 995 – Bela Vista, Porto Alegre | 5.0 km from PUCRS.

Hotel Master Porto Alegre ★★★ | Av. Carlos Gomes, 565 – Bela Vista, Porto Alegre | 5.7 km from PUCRS.

Hilton Porto Alegre ★★★★★ | Rua Olavo Barreto Viana, 18 – Moinhos de Vento, Porto Alegre | 6.3 km from PUCRS.

Ibis Porto Alegre Moinhos de Vento ★★★★★ | Rua Marquês do Herval, 540 – Moinhos de Vento, Porto Alegre | 6.4 km from PUCRS.

Hotel Laghetto Stilo Higienópolis ★★★★★ | Rua Inácio Vasconcelos, 49 – Boa Vista, Porto Alegre | 6.4 km from PUCRS.

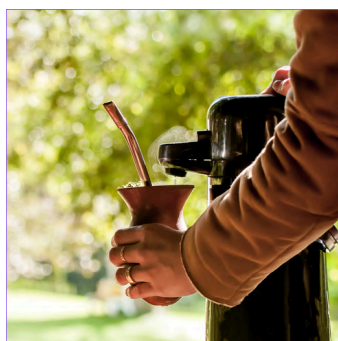
**Fellini Events, the conference official travel agency, worked straight with the aforementioned hotels to offer attractive rates, so we recommend booking you hotel, clicking [here](#).**

## 5. When You Arrive & During Your Stay

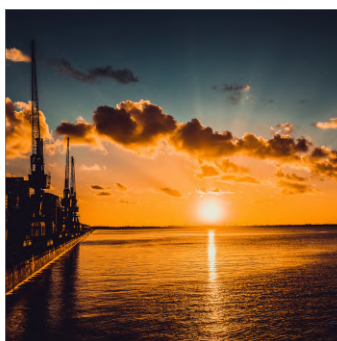
**About the Host City:** Porto Alegre or POA (nickname) is the capital of the state of Rio Grande do Sul, located in southern Brazil. It's a multicultural, green, and increasingly dynamic city, known for its warm hospitality and strong local traditions, build by a mix of portuguese, italian, and german colonization among others. With a population of 1.5 million people, it blends urban energy with natural beauty, offering an experience that is both authentic and modern. Local highlights include:

- The tradition of chimarrão (a regional tea shared among friends)
- The iconic sunset over the Guaíba River
- The strong gaúcho identity, reflected in food, music, and customs

**Discover the city through this [video](#).**



**Chimarrão**



**Sunset**

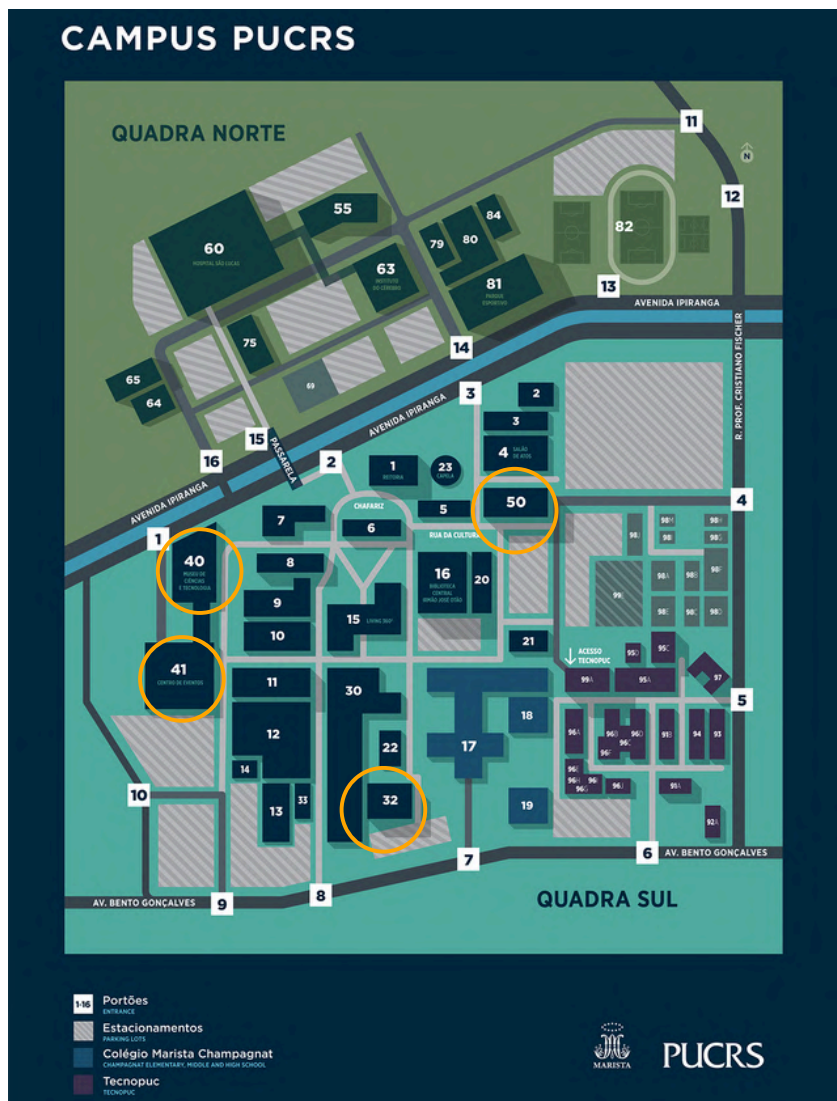


**Serra Gaúcha**

### **\*About PUCRS**

Pontifical Catholic University of Rio Grande do Sul: The conference venue is the PUCRS Campus, located at Av. Ipiranga, 6681 – Partenon. PUCRS is one of Brazil's leading private not-for-profit universities, with excellence in research, innovation, and academic infrastructure. The campus features modern facilities with Wi-Fi access, cafés, restaurants, a science and technology park (Tecnopuc), the Museum of Science and Technology, and much MORE!

Here is the campus map to guide you to key locations:



**Schedule & Campus Locations:** PUCRS has a large and beautiful campus, so it's important to know exactly where each activity will take place. Below you'll find daily venue information, addresses for ride-hailing apps like Uber, and additional logistical tips.

### June 9 – Doctoral Consortium & Workshops

The Doctoral Consortium will be held at Building 50, home to the School of Business and Graduate Programs. Workshops will be held at Building 32.

- Ride-hailing tip (Uber/Address): PUCRS | Av. Ipiranga, 6681 – Partenon, Porto Alegre – RS, 90610-001

### June 10–12 – All other conference activities

Keynote speakers, paper sessions, panels, posters and social events), will take place in the Events Center, located in **Building 40/41**.

- Ride-hailing tip (Uber/Address): Museu da PUCRS | Av. Ipiranga, 6681 – Prédio 40, Partenon, Porto Alegre – RS, 90619-900

Look for campus signs and volunteers to assist you with directions. Campus security staff are available wearing a gray uniform.

**Wifi:** Connect to the Eduroam network using your organization credentials, or register on the "PUCRS Visitantes" network.

# GOING AROUND POA

## Before the conference

If you're arriving in Porto Alegre or POA (nickname) a few days or even hours before dg.o 2025 begins, take the opportunity to explore the city's rich cultural heritage and natural charm. Here are some must-see attractions:

- **Iberê Camargo Foundation:** A striking modern art museum on the Guaíba River, showcasing works by Iberê Camargo and other contemporary artists.
- **MARGS – Art Museum of Rio Grande do Sul:** Located in Praça da Alfândega, this neoclassical building features regional art exhibitions and an elegant café.
- **Casa de Cultura Mario Quintana:** A vibrant cultural hub with exhibitions, theater, cinema, music, cafés, and artisan shops, housed in a former hotel where poet Mario Quintana once lived.
- **Historic Center Walking Tour:** Explore landmarks such as the Metropolitan Cathedral, São Pedro Theater, Piratini Palace, and Praça da Matriz. Guided tours blend history, architecture, and culinary traditions.
- **Parque Moinhos de Vento:** A tranquil park with lakes, sculptures, and walking trails in one of the city's most charming neighborhoods.
- **Farroupilha Park (Redenção):** Porto Alegre's most iconic public park, home to cultural events and surrounded by museums and cafés.
- **You can also book a POA City Tour, [here](#).**

### Emergency Numbers:

Health Emergency (SAMU ambulance): 192

Fire Service: 193

Police: 190

**Pharmacies:** Pharmacies, known as "farmácias" or "drogarias," are widely available throughout Porto Alegre. Some are open 24 hours and offer delivery services. Some well-known pharmacies include Panvel, São João, Droga Raia.

**Recommended Hospitals:** The conference venue (PUCRS) is located in the Partenon neighborhood, and attendees will have convenient access to a range of medical services nearby.

- Hospital São Lucas da PUCRS – On campus, offers emergency services and access to a wide range of health services, available at no costs to foreigners as well. Av. Ipiranga, 6690 – Partenon Neighborhood.
- Hospital Moinhos de Vento – One of the most renowned private hospitals in the region, known for its high-quality care and international patient services. Exclusive for the ones with health insurance. 910 Ramiro Barcelos Street – Moinhos de Vento Neighborhood.
- Hospital de Clínicas – Large public hospital offering a wide range of health services. To the ones with health insurance and SUS. 2350 Ramiro Barcelos Street – Santa Cecilia Neighborhood.

# GOING AROUND POA

## During the conference

During the conference several curated visits will be offered to participants, free of charge:

- **4th District Revitalization Tour:** Once abandoned, the 4th District is now a thriving creative and innovation hub, supported by a multi-stakeholder smart regeneration program. Visit this urban lab full of bars, cafés, and city transformation stories.
- **Visit to Porto Alegre City Hall:** Meet city officials and learn about Porto Alegre's digital governance strategies and its public-private collaborations.
- **Historic Center Excursion (1–3 hours):** Join a guided walk through the heart of the city and understand Porto Alegre's historical layers and smart city integration.

You can also book a POA City Tour, [here](#).

## Here are some recommended restaurants to try during your stay:

Porto Alegre has a vibrant and diverse food scene that reflects its cultural richness. From traditional gaúcho barbecue to international cuisine and creative contemporary dishes, there is something for every taste.

### Traditional & Regional Cuisine

- Churrascaria Barranco – A local legend for authentic Gaúcho barbecue (churrasco) in a casual setting.
- Bah Restaurante – Traditional Gaúcho flavors reimaged in an upscale atmosphere.
- 20/9 Pontal Restaurante – Regional dishes with a beautiful riverside view.
- Freio de Ouro – Rustic and classic steakhouse with regional flavors.
- Parilla del Sur – Uruguayan grill with generous portions and a loyal following.
- Sabor de Luna – Cozy Argentine-style cuisine with great meats and wines.

### Italian & German Cuisine

- Bottega Maria Bar & Cucina – Contemporary Italian cuisine with a cozy atmosphere.
- Puppi Baggio – Elegant Italian fine dining with pastas, risottos, and a strong wine list.
- Benjamin Osteria Moderna – A refined Italian restaurant blending classic recipes with contemporary flair.
- Tartare – A refined bistro known for Italian/German-inspired cuisine and a seasonal menu.
- Ratskeller – Traditional German restaurant with schnitzel, sausages, and beer in a charming, historic setting.

## Italian & German Cuisine

- Bottega Maria Bar & Cucina – Contemporary Italian cuisine with a cozy atmosphere.
- Puppi Baggio – Elegant Italian fine dining with pastas, risottos, and a strong wine list.
- Benjamin Osteria Moderna – A refined Italian restaurant blending classic recipes with contemporary flair.
- Tartare – A refined bistro known for Italian/German-inspired cuisine and a seasonal menu.
- Ratskeller – Traditional German restaurant with schnitzel, sausages, and beer in a charming, historic setting.

## Japanese & Fusion

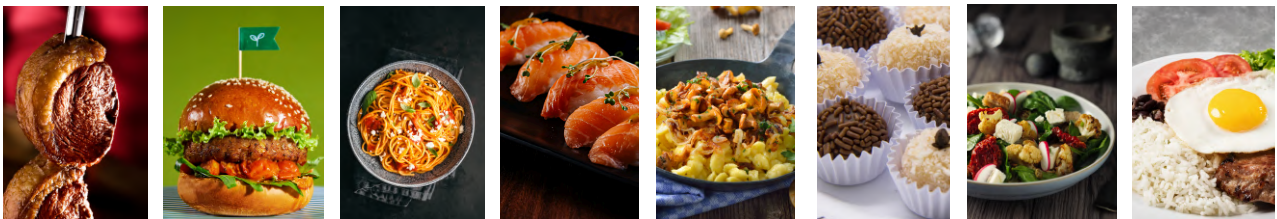
- Takedo – Upscale Japanese dining with excellent sushi and contemporary dishes.
- Sushito Experience – Creative sushi with fusion elements and bold flavors.
- Marujo – Seafood spot with a cool vibe.

## International & Contemporary

- Press Restaurante – Brazilian cuisine with modern flair and seasonal ingredients.
- Eat Kitchen – Cais Embarcadero – Trendy riverside food court with multiple culinary concepts.
- Koh Pee Pee – Long-established Thai restaurant with authentic flavors and elegant service.

## Vegetarian & Vegan Friendly

- RAW – A plant-based restaurant focused on raw, functional, and gluten-free cuisine.
- Mantra Gastronomia & Arte – A vegan restaurant inspired by Indian gastronomy, offering complete menus with starters, main courses, and desserts.
- Capincho – Trendy bistro with locally sourced, seasonal dishes, including plant-based options.
- Mesa – Innovative contemporary cuisine with vegetarian tasting menus.



**Prefer delivery?** Use iFood, Brazil's leading delivery app, to find these and many more options. It's available in English and easy to use during your stay.

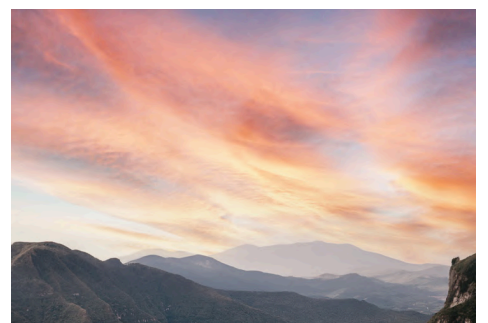


## After the conference: Explore Southern Brazil

Extend your stay and discover some of Brazil's most charming natural and cultural destinations just a few hours from Porto Alegre:

- **Gramado & Canela:** Two picturesque mountain towns known for their European-style architecture, chocolate shops, fine dining, and festivals — perfect for a weekend getaway.
- **Vale dos Vinhedos (Wine Valley):** Explore the heart of the Serra Gaúcha, Brazil's wine-producing region, with colonial wineries, tastings, and scenic vineyards.
- **Aparados da Serra National Park:** A nature reserve famous for its dramatic canyons, hiking trails, and breathtaking views. Ideal for ecotourism and adventure sports.
- **Pró-Mata Center for Research and Nature Conservation:** Located 3.5 hours from Porto Alegre, this ecological reserve offers immersive nature experiences and supports biodiversity conservation.

If you're interested in any of these tours, book your experience [here](#).



### Extra Tips:

- Tipping is usually included in your restaurant bill (10–15%). It's not mandatory, but widely practiced.
- Tap water is not drinkable. Always purchase bottled water, widely available in stores and hotels.

**WE HOPE YOU ENJOY  
POA/BRAZIL AND HAVE  
AN AMAZING TIME HERE!**





Stay updated by following  
dg.o 2025 on Instagram

[CLICK HERE](#)

Check an updated version of  
this guide at:

[dgsociety.org/dgo-2025/program/](https://dgsociety.org/dgo-2025/program/)

## Still have questions?

Feel free to reach  
out to the dg.o 2025  
team via email

[dgo2025@easychair.org](mailto:dgo2025@easychair.org)

